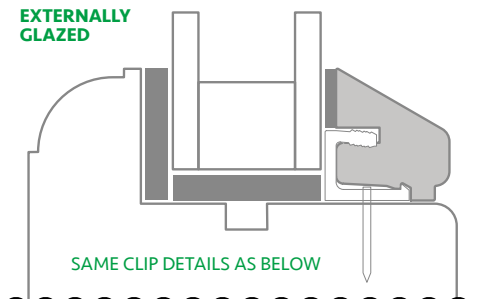


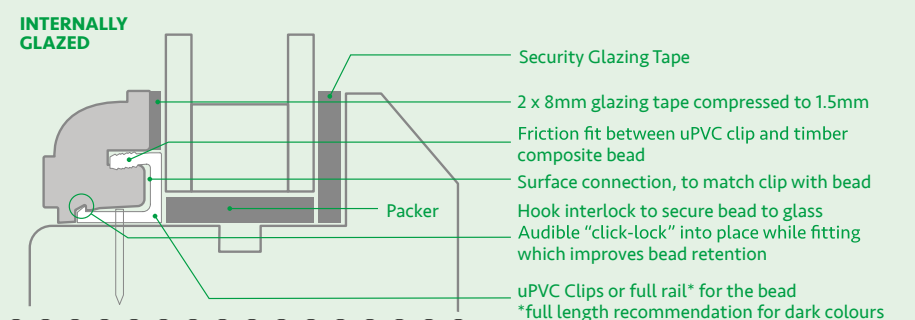
Qwood Clipped Glazing Bead

EXTERNALLY
GLAZED



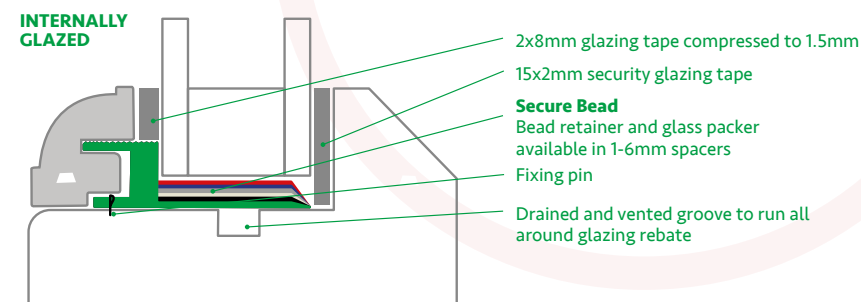
SECTION DRAWING FOR USE OF **QW-SD3** GLAZING BEAD

INTERNALLY
GLAZED



SECTION DRAWING FOR USE OF **QW-SD4** GLAZING BEAD

INTERNALLY
GLAZED



SECTION DRAWING FOR USE OF **QW-SD2** GLAZING BEAD

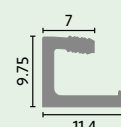
Pinless (Clipped) Glazing Beads

We continue to invest in our range of pinless beads and are always open to new profiles and ideas. If you are interested in any of the profiles on the next 4 pages please call and we will be happy to help and advise.

So why did we design a new clip?

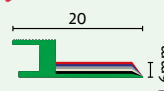
- Enhanced hook interlock which improves lateral compression for bead retention and security against the glass
- A more cost effective clip design

A



QW-GCA-75
or **QW-GCA**
Glazing Bead Clip

B



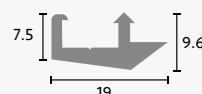
SCB (1-6mm)
1-6mm
Secure Bead

C



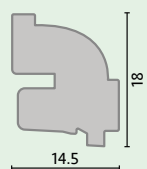
QW-GBC1
Glazing Bead Clip
3m lengths

D



QW-DBC1
Drip Bead Clip
3m lengths

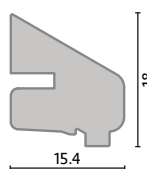
A



QW-SD4
Glazing Bead

USE WITH
QW-SDA3

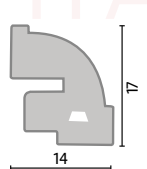
A



QW-SD3
Glazing Bead

USE WITH
QW-GCA-75

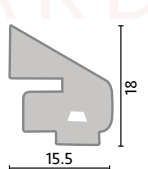
B



QW-SD2
Glazing Bead

USE QW-SDA1
GLAZING BAR
& SCB CLIP
FOR INTERNAL
GLAZING

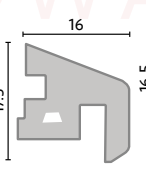
B



QW-SD1
Glazing Bead

USE WITH
SCB CLIP

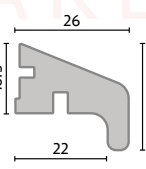
C



QW-GB1
Glazing Bead

USE WITH
QW-GBC1

D



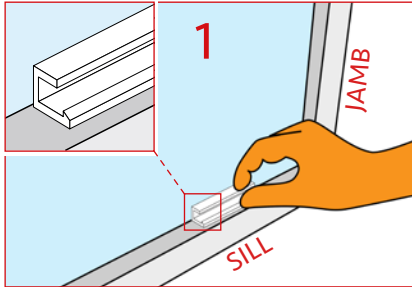
QW-DB1
Bottom
Vent Bead

Clipped Glazing Beads

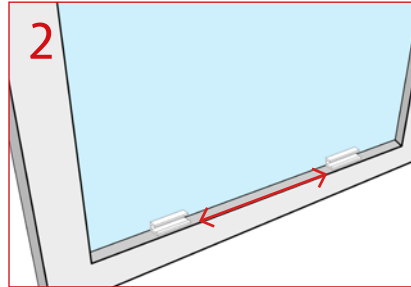


Qwood profiles: QW-SD4, QW-SD3

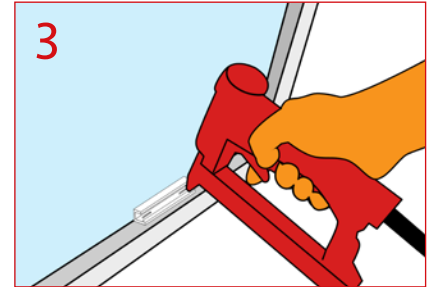
Clip: QW-GCA



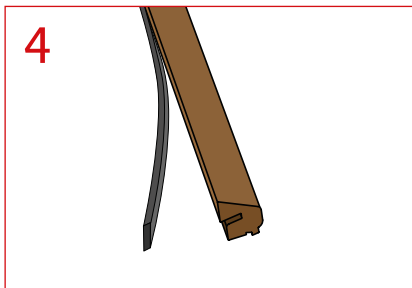
Fit glass panel safely into the frame as required. Offer clip QW-GCA to frame against glass ensuring the correct orientation.



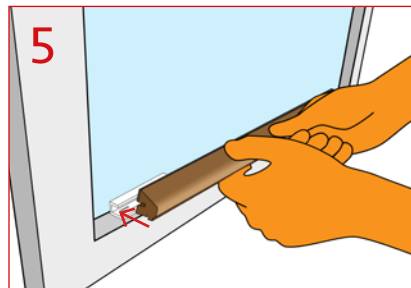
Ideal clip length is 50mm and 75 mm (but longer length can be used if required). We recommend clips should be spaced at 150 mm intervals. This is a customer preference – the more clips the stronger the fixing.



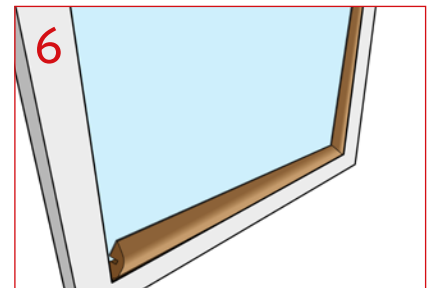
The clips can be fixed using staples, screws or pins. We recommend to use x 80 series staples 12 mm (or longer if preferred) per clip. With the air gun regulators set at approx. 4 bar. Ensure fixings do not protrude into the clip channel and foul bead fitments.



Apply strip of self-adhesive dry glaze tape to back edge of QW-GB5A (SD1A) bead. The tape should be at least 2.5mm thick to ensure adequate compressive bond.



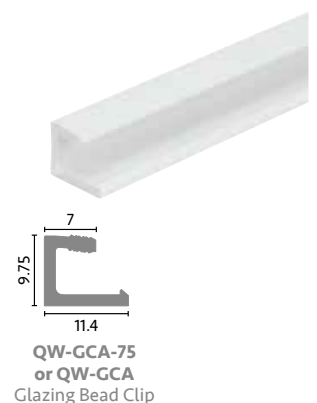
Starting with the base bead, peel off the protective paper strip from the dry glaze tape and push-fit the bead onto the clips along the base. Use a soft faced mallet to tap bead into position, an audible "click" will signal correct fitting.



Repeat the process for the jambs and top. The beads will sit automatically in line with frame and should not protrude when pushed correctly onto the clips.

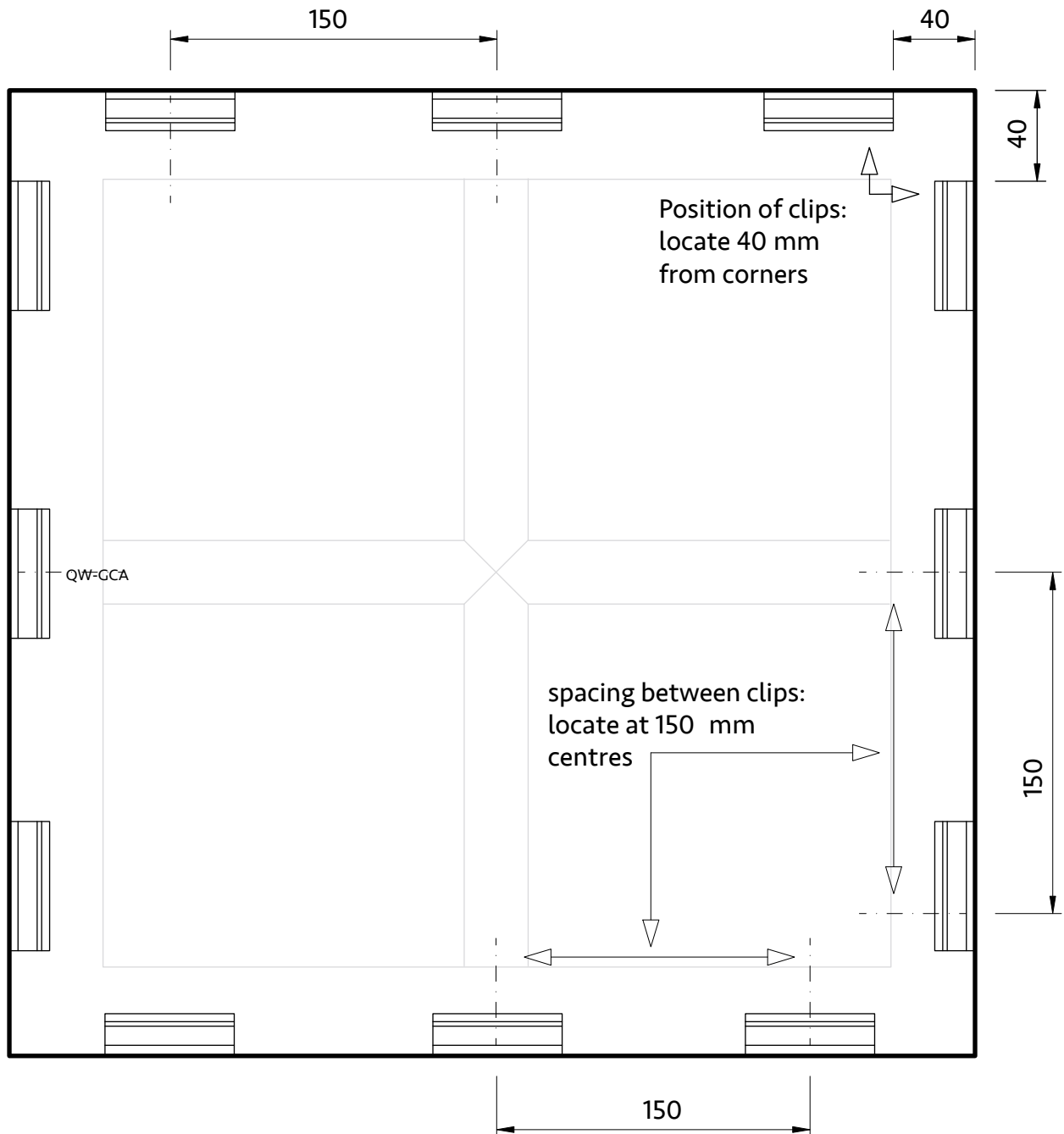


Using a felt covered block or a roller, gently apply pressure along each bead to ensure that they are firm in place and a good bond between the dry glaze tape and glass has been achieved.



Fitting Instructions

Clip position and spacing recommendation:



Recommendations for dark colours:

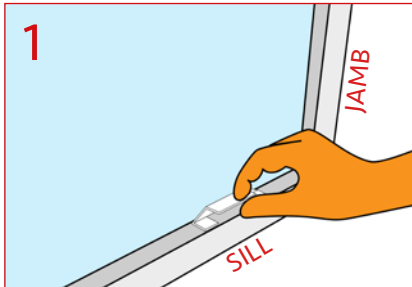
- » Clip spacing at 150mm centered
- » Apply pin to the outmost edges of each bead to aid stability
- » Where possible pin beads down in concealed places

Clipped (Packer) Glazing Beads

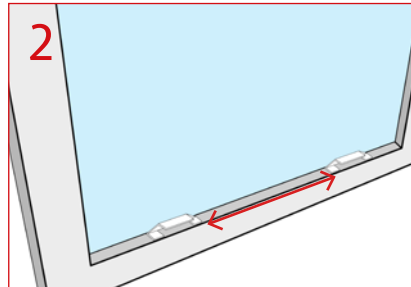


Qwood profiles: QW-SD1, QW-SD2

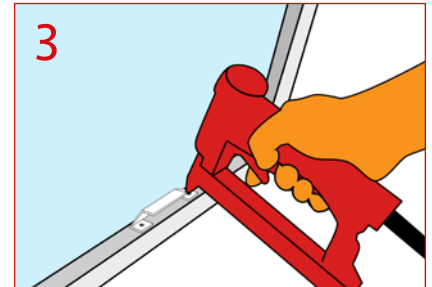
Clip: SCB



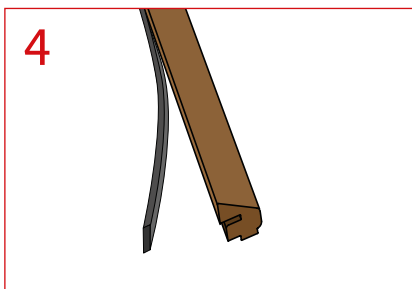
Once the glazing unit is safely in position, push in base 'clip-packers'; 40 mm from each corner and then every 150 mm along base. Remove standard packers if desired.



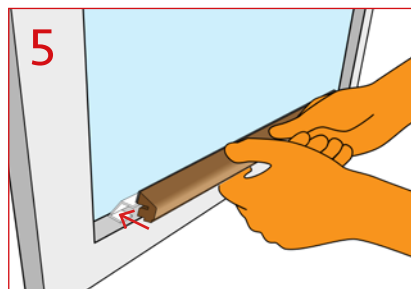
Place and pin 'clip-packers' 40 mm from each corner and then every 150 mm around the glazed unit up the jambs and across the top. Use appropriate coloured/thickness 'clip-packers' to provide a good friction fit.



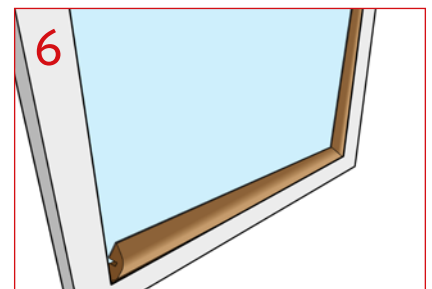
Pin the base 'clip-packers' to frame to secure.



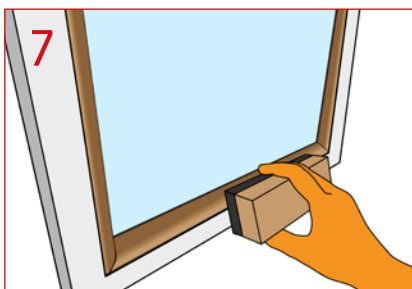
Apply strip of self-adhesive dry glaze tape to back edge of QW-GB5 (SD1) bead.



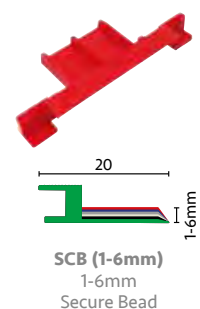
Starting with the base bead, peel off the protective paper strip from the dry glaze tape and push-fit the QW-GB5 (SD1) bead onto the 'clip-packers' along the base.



Repeat the process for the jambs and top. Make sure beads sit in line with frame and does not protrude.

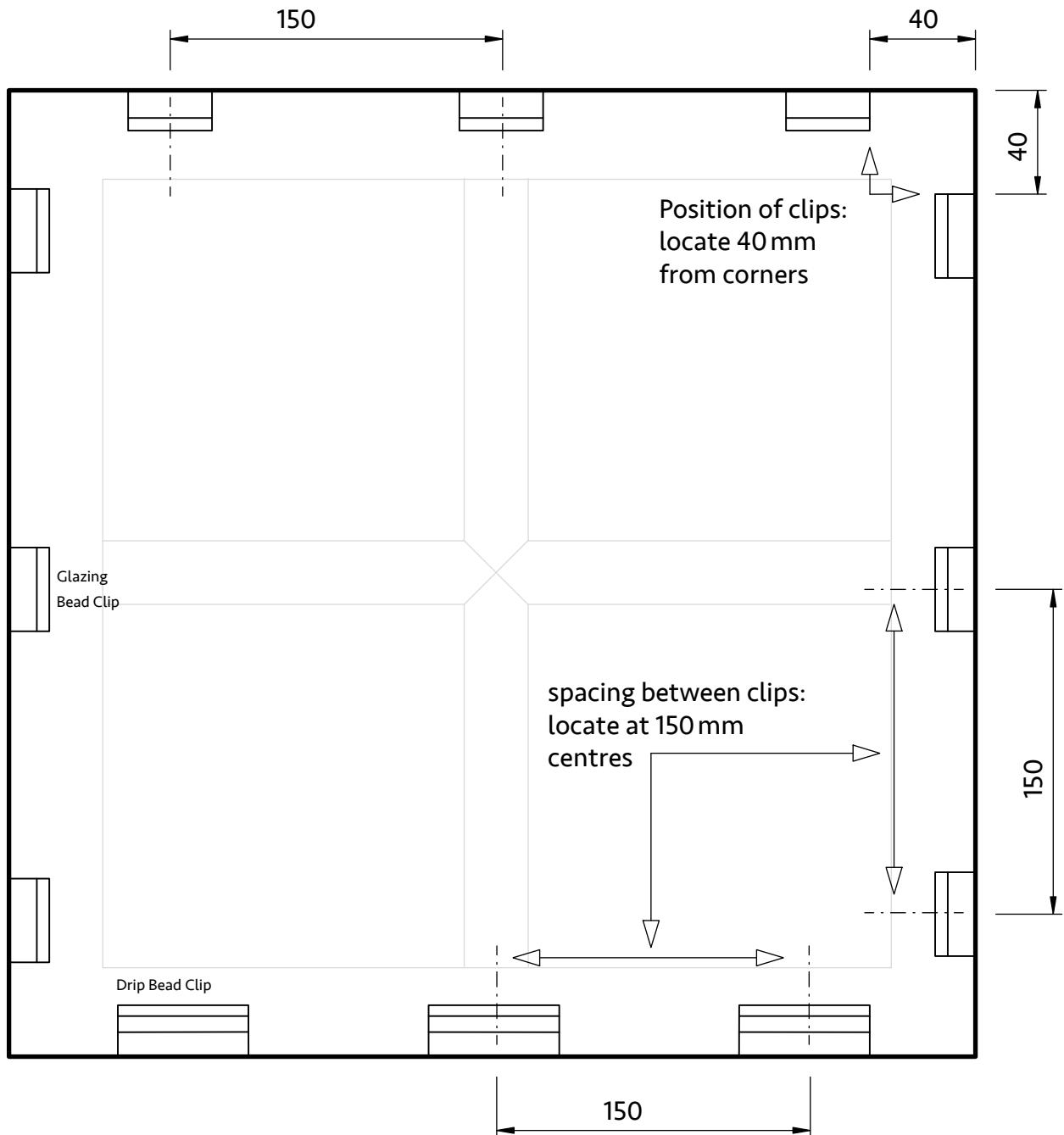


Using a felt covered block, from the front, gently tap the QW-GB5 (SD1) beads around the glazing unit to ensure that they are firmly in place and a good bond between the dry glaze tape and glass has been achieved.



Fitting Instructions

Clip position and spacing recommendation:



Recommendations for dark colours:

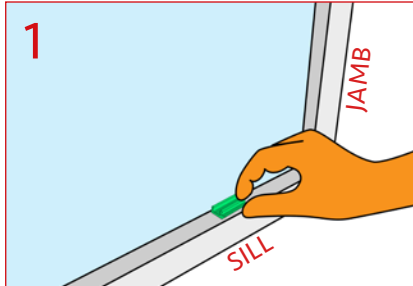
- » Clip spacing at 150mm centered
- » Apply pin to the outmost edges of each bead to aid stability
- » Where possible pin beads down in concealed places

Dry Glaze

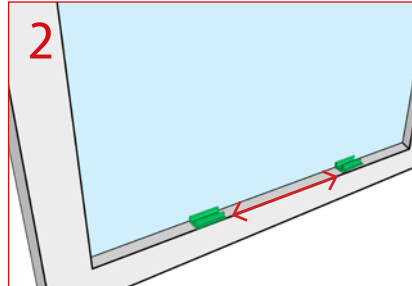


Qwood profiles: QW-GB1, QW-DB1

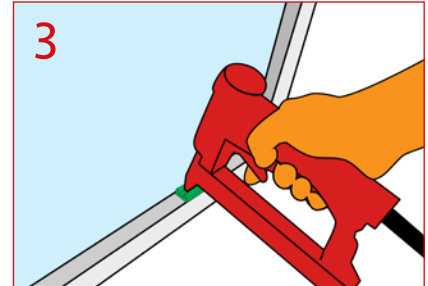
Clip: QW-GBC1 or QW-DBC1



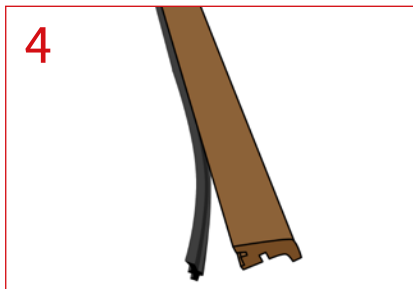
Fit glass panel to frame as required. Place DBC1 and GBC1 against the glass ensuring that they are in the correct orientation. See illustration above.



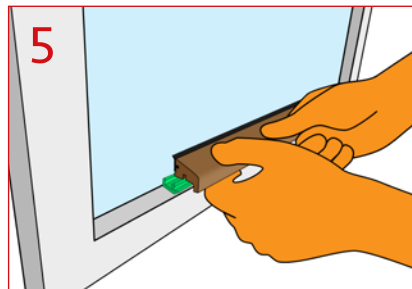
Ideal clip length is 35mm and 50mm (but longer lengths can be used if required). We recommend clips should be spaced at 200mm intervals. This is a customer preference - the more clips, the stronger the fixing.



The clips can be fixed using staples, screws or pins. We recommend to use 2 x 80 series staples 12mm (or longer if preferred) per clip. With the air gun regulators set at approximately 4 bar. Ensure fixings do not protrude into clip channel and foul bead fitment.



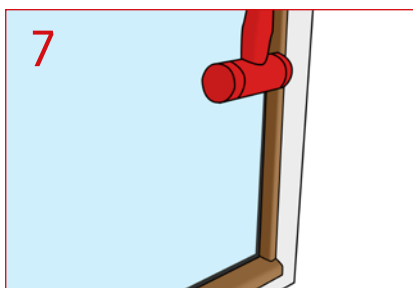
Measure and straight cross cut DB1 to meet the jambs. Then fit gasket to bead gasket slot in the profile. Ensure gasket allows a minimum gap of 2mm uncompressed.



Offer DB1 bottom bead to clips. Angle in from one side to ease onto the clips.

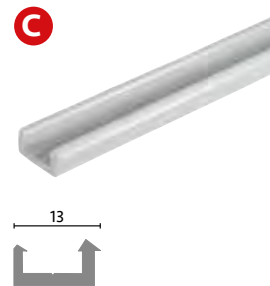


Once the bead is in the desired position on the clips, use a small glazing mallet to tap down into the final location. Check the bead is firmly located, it should not be able to be removed using your fingers.

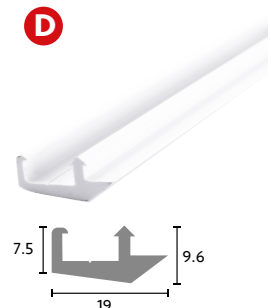


Repeat stages 4-6 with GB1.

- Side GB1 beads can be cut to 22° to fit flush with the bottom bead and top rail (see illustration).
- GB1 side and top can be mitre cut joined if preferred.



QW-GBC1
Glazing Bead Clip
3m lengths



QW-DBC1
Drip Bead Clip
3m lengths