

Trimvent® Select Xtra S13

Surface mounted slot ventilator

Suitable for PVCu, Aluminium and Timber

Trimvent® Select Xtra S13 is a surface mounted plastic slot ventilator that fits over a 13mm slot in a window and provides an Equivalent Area (EA) of 2000mm², 4400mm² or 5000mm². It can be fitted with an XC13 canopy or GS22 grille.

The XS13 is ideal for both new build and refurbishment situations using any window material, and is available in a variety of colours.

The Xtra design improves the Trimvent® Select range to offer increased ventilation. It gives optimum airflow (and therefore EA) utilising existing slot sizes and vent lengths. It has been specifically developed to meet the recent 2022 revisions to Part F of the Building Regulations for Ventilation (England & Wales), is optimised for use with the Scottish Technical Standards and to improve performance for requirements throughout the UK and Europe.

Trimvent® Select ventilators have been specified and fitted on tens of millions of windows throughout the UK and mainland Europe over the last 20 years.

Features & Benefits

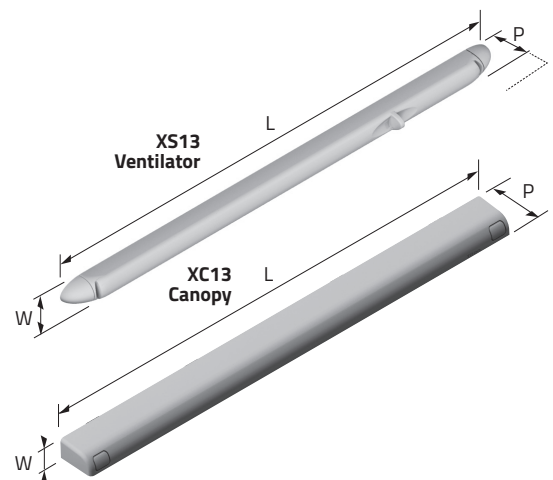
- Upgraded design to improve performance and Regulations compliance
- Unique occupant controllable tilting T-bar
- When specified correctly complies with recently revised Building Regulations
- Rounded unobtrusive shape
- Can be fitted on the sash, frame or overhead section
- For use over 13mm slot
- Based on successful Trimvent® principle
- Sculpted finger recess
- Screw fix or clip fix versions
- Patented and registered design
- Available in vent and canopy packs
- Wide range of colours and wood grain finishes available



Trimvent® Select Xtra S13 Ventilator



Trimvent® Select Xtra XC13 Canopy



Details

Product	Product Code	(L) Length	(W) Width	(P) Projection Closed-Open	EA (mm ²)	Free Area (mm ²)	Slot Detail / Free Area of Slot (mm ²)
S13 2000EA Vent Screw Fix*	TS1131750	265	18.5	20 - 26	2000	2212	
XC13 270 Canopy Screw Fix	TS2132040	270	18	32.5		3003	
S13 2000EA Vent Clip Fix*	TS1132051	265	18.5	20 - 26		2212	
XC13 270 Canopy Clip Fix	TS2132041	270	18	32.5		3003	
XS13 4400EA Vent Screw Fix	TS1134470	411	18.5 - 30	20 - 27	4400	4285	
XC13 412 Canopy Screw Fix	TS2134040	411	18	32.5		5027	
XS13 & XC13 4400EA Screw Fix Pack	TS4134470						
XS13 4000EA Vent Clip Fix	TS1134071	411	18.5 - 30	20 - 27		4149	
XC13 412 Canopy Clip Fix	TS2134041	411	18	32.5	4000	4809	
XS13 & XC13 4000EA Clip Fix Pack	TS4134071						
XS13 5000EA Vent Screw Fix	TS1135070	497	18.5 - 30	20 - 27		5230	
XC13 497 Canopy Screw Fix	TS2135040	497	18	32.5		6258	
XS13 & XC13 5000EA Screw Fix Pack	TS4135070				5000		
XS13 5000EA Vent Clip Fix	TS1135071	497	18.5 - 30	20 - 27		5096	
XC13 497 Canopy Clip Fix	TS2135041	497	18	32.5		6055	
XS13 & XC13 5000EA Clip Fix Pack	TS4135071						
GS22 241 Pair Grilles**	TS3224050	241 x 2	27	1.5	5000	10022	 Grilles only

EA figures above and marked on vents are achieved when fitted to manufacturer's recommendations. Tested in accordance with BS:EN 13141-1 (2019).

*Fully open position of vent differs from XS13.

**Typically used for overhead sections.

This product does feature some protrusion into the slot. Using a product without locators could affect the stability of the product in certain extreme conditions.

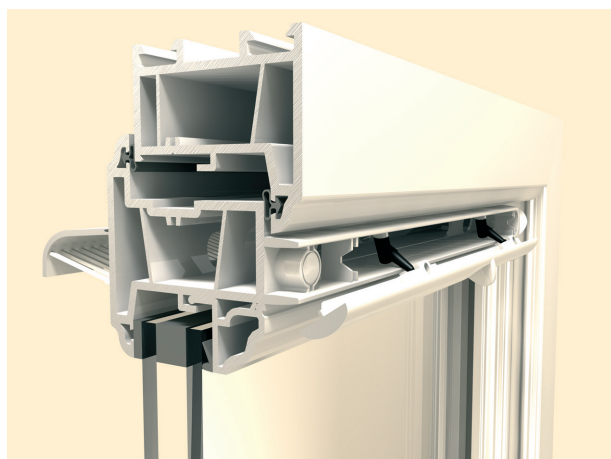
Manufactured from

Vent – PBTP (UV Stable) & POM, Canopy – PVCu

Grille – PP

Recommended screws

3.5mm (No.6) Pan Head or equivalent



Through sash

Standards

Tested in accordance with BS EN 13141-1:2019 (airflow, air leakage and weather tightness)

Acoustic performance tested in accordance with BS EN ISO20140-10:1992, BS EN ISO140-10:1991 and single figures to BS EN ISO717-1:1991

Performance

(Full test details available on request)

Equivalent Area: see above

Free Area: see above

Air Leakage (m³/hr @ 50Pa): screw fix – 2.42, clip fix – 7.29. 5000 version screw fix – 4.57, clip fix – 5.69

Water Resistance (Pa): 4400EA version – 600Pa, 5000EA version – 450Pa

Acoustic D_{n,e,w} (+/-): 4400EA version – vent open 32 (0;1), vent closed 41 (0;-1). 5000EA version – vent open 32 (-1;0), vent closed 35 (0;0)

Finishes

Suffix product code with:

392 (white), -315 (brown), -496 (bright white), -662 (toffee)

Other colour options available. Please contact sales for details.

More information

enquiries@titon.com / 01206 713801