

TIMBAGLAZE

Multi Purpose Glazing Sealant

Product Description

Timbabuild® Timbaglaze Multi-Purpose Glazing Sealant by Chemfix, a single component hybrid polymer specifically designed for bedding in any type of glazing unit indoors or outdoors. This adhesive sealant has especially strong initial bonding. Suitable for most substrates, including wet substrates, does not cause corrosion on metals. The gluing and sealing mass Adhesive has good vibration and noise-suppressing properties.

This is the worlds only genuine all weather use Glazing Sealant.

Adhesive is UV- and weather resistant, paintable, does not shrink during the curing process, and does not contain harmful components.

Timbaglaze provides a permanent replacement for window putty but also an improved level of performance for the purposes of renovation and maintenance within the Timbabuild® system.

Key Features

- Can be applied to **WET** or **DAMP** surfaces.
- Paintable after **1 HOUR** - (skins over in 20 minutes).
- UV and weather resistant.
- Extrude with any mastic tool, directly to the area.
- High Strength & Durability.
- Fast and Simple to Use, Easy to Clean and Store.
- Paintable and Stainable.
- For any type of glazing unit, new or repair.
- Suitable for use with Butyle tapes & hot melt in double glazed units.
- Used in Renovation contracts to restore listed buildings.
- No shrinkage - maintains a strong elastic bond.
- Timbaglaze has a service life of minimum 10 years.

Putty Replacement



Available Sizes

290ml Cartridge
12 per carton outer

Conforms to
ISO 9001 & 14001
VOC A+ Rating

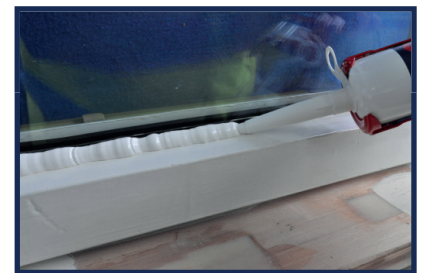


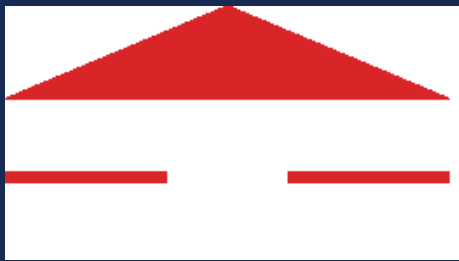
Technical Data

Property	Unit	Value
Painting time (+23 °C/23% r.h.)	Mins	60 Mins
Final Curing	Hours	24 Hours
Density (DIN 53479)	g/cm ³	1,55 ± 0,05
Properties of cured adhesive		
Hardness (Shore A)		60 +/- 5
Tensile strength (ISO 37)	N/mm ²	3,2
Elasticity modulus at 100% elongation	N/mm ²	2,8
Elongation at breaking point (ISO 37)	%	150 +/- 10
Temperature resistance after curing	°C	-40 to +80

Order Codes

Product	Unit / Box	Order Code
Timbaglaze 290ml Glazing Sealant	12pcs	66215
Sealant Extrusion Tool	12pcs	65463
Sealant Applicator	100pcs (10pcs per bag)	TBA





TIMBAGLAZE

Multi Purpose Glazing Sealant

Application

Test the adhesion of the adhesive sealant on the substrate before use in order to make sure that the product is suitable for the intended purpose. The surfaces must be free from grease, oil, dust and loose particles.

Cut off the threaded end of the cartridge and screw on the application nozzle for directing the adhesive.

Cut the threaded end at an angle of about 45° so that a suitable opening for application is produced. Place the cartridge together with the applicator in the gun and fill the application nozzle with adhesive sealant, by repeatedly pressing the gun trigger. For a clean joint, use masking tape before placing the detail.

Remove the tape before final curing of the adhesive.

Product is over-paintable after 1 hour.

Fully cured after 24 hours.

Refer to the Timbabuild® Repair Guide for further information.

Timbabuild® System



The Timbabuild® Epoxy Wood Repair System.

Timbabuild® is a comprehensive range of products designed to enable high quality, durable and cost-effective timber repairs to be carried out, with the minimum of effort and maximum efficiency.

Timbabuild® was developed as a permanent, effective and practical alternative to replacing damaged or rot-affected In-situ timber joinery units. It is ideal for repairing windows, doors, frames and fascias. Timbabuild was developed in close consultation with local authorities, maintenance professionals and refurbishment contractors.

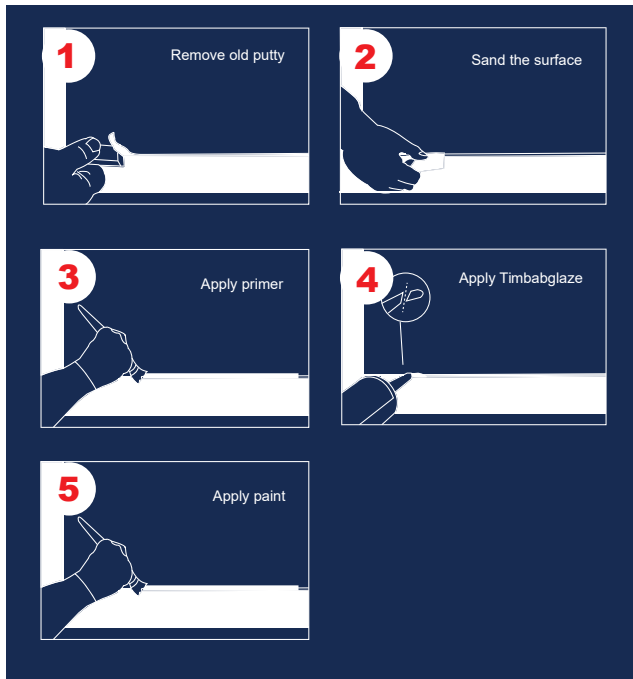
Health & Safety

Ensure sufficient ventilation during application. Avoid contact with skin and eyes. In case of contact with eyes, rinse immediately with plenty of water and seek medical advice. Highly inflammable, keep away from sources of ignition, open fire, and do not smoke near the product. Keep out of the reach of children.

For further information refer to the Material Safety Data Sheet.

Other Information

STORAGE / SHELF LIFE	IMPORTANT
This product should be stored between +5°C & +30°C in closed original packaging.	The information and data given is based on our own experience, research and testing and is believed to be reliable and accurate. However, as Chemfix Products cannot know the varied uses to which its products may be applied, or the methods of application used, no warranty as to the fitness or suitability of its products is given or implied. It is the users responsibility to determine suitability of use. For further information please contact our Technical Department.
The Shelf life of the product is 12 months from the manufacture date.	



Sealant Extrusion Tool



Sealant Applicator

