



**SASH + DOOR  
HARDWARE**



Joinery by  
**Stanbrook  
& Nicholson**

**Weatherfold 4s**  
Bi-Fold Door System

# Weatherfold 4s

Brio's Weatherfold 4s is recognised as the leading product in exterior folding door hardware. Brio Weatherfold 4s is a top hung exterior folding system which can handle panels up to 100kg with precision and ease. Large openings of 3.3m high and 16m wide can be achieved with 8 equal size panels folding seamlessly in each direction with inward or outward opening functionality.

Matching hardware comes in four premium finishes: Stainless (SS), Polished Stainless (PS), PVD Brass (PB) and PVD Black (PR). Hinge sets are Non-Mortice as standard, Mortice Round Cornered is available for companies using CNC machines.

- Easy height Adjustment
- 4 finishes
- Up to 1000mm flush bolts
- Max Panel Weight: 100kg
- Max Panel Width: 1000mm
- Max Panel Height: 3300mm
- Min Panel Thickness: 35-68mm
- Max Number of Panels: 8 each way

## 3 DOOR KIT INCLUDING:

- 1 x 250-A-2.5m top track
- 1 x PS13 6M fir for top track
- 1 x 94PPA-2.5 polyprop & ali channel
- 1 x BWS1 pivot set
- 1 x BWS4 hanger set (chrome bearings)
- 1 x BW7 hinge handle set
- 1 x 456 locking flush bolt
- 1 x 456 non-locking flush bolt

## FINISHES

POLISHED  
STAINLESS  
STEEL

PVD

BLACK

SATIN  
STAINLESS  
STEEL



## BWS1-100H TOP END PIVOT

- Vertical and lateral adjustment
- Easy adjustment, with push button system ensuring pins cannot drop during operation
- Available in mortice or non-mortice
- 100kg capacity



## 199SS SECURITY ALIGNER BOLT

- Adjustable security aligner
- Concealed component (not visible from outside making forced entry difficult)



## BW189H JAMB PIVOT

- For matching hinge on door stiles
- Positive screw on jamb keep to prevent doors bowing
- Recommended for door heights over 2.2m
- Easy adjustment of up to 6mm



## BWS1-100H BOTTOM END PIVOT

- Metal shoe
- Universal handing



## BWS4-100C INTERMEDIATE HANGER SET

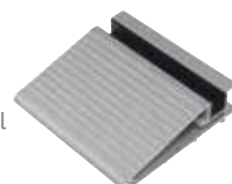
- Supplied with additional bearings to prevent side thrust
- Standard 100kg rollers
- Security pin and easy adjustment



EASY PRESS & TURN FOR  
HEIGHT ADJUSTMENT

## 93HSB HYBRID CILL

- Suitable for residential or commercial
- Allows panel thickness of 44mm+
- Cills available up to 6m in length
- Bronze or Silver finish



# About SDH

SDH are one of leading companies supplying internal and external straight sliding and bifold door hardware for the Timber industry. With over 50 years of combined experience in sourcing, specifying and delivering solutions we can understand your project needs and requirements and provide the correct product.

We pride ourselves on technical knowledge, helpful competent sales staff, competitive transparent pricing and a can do attitude.

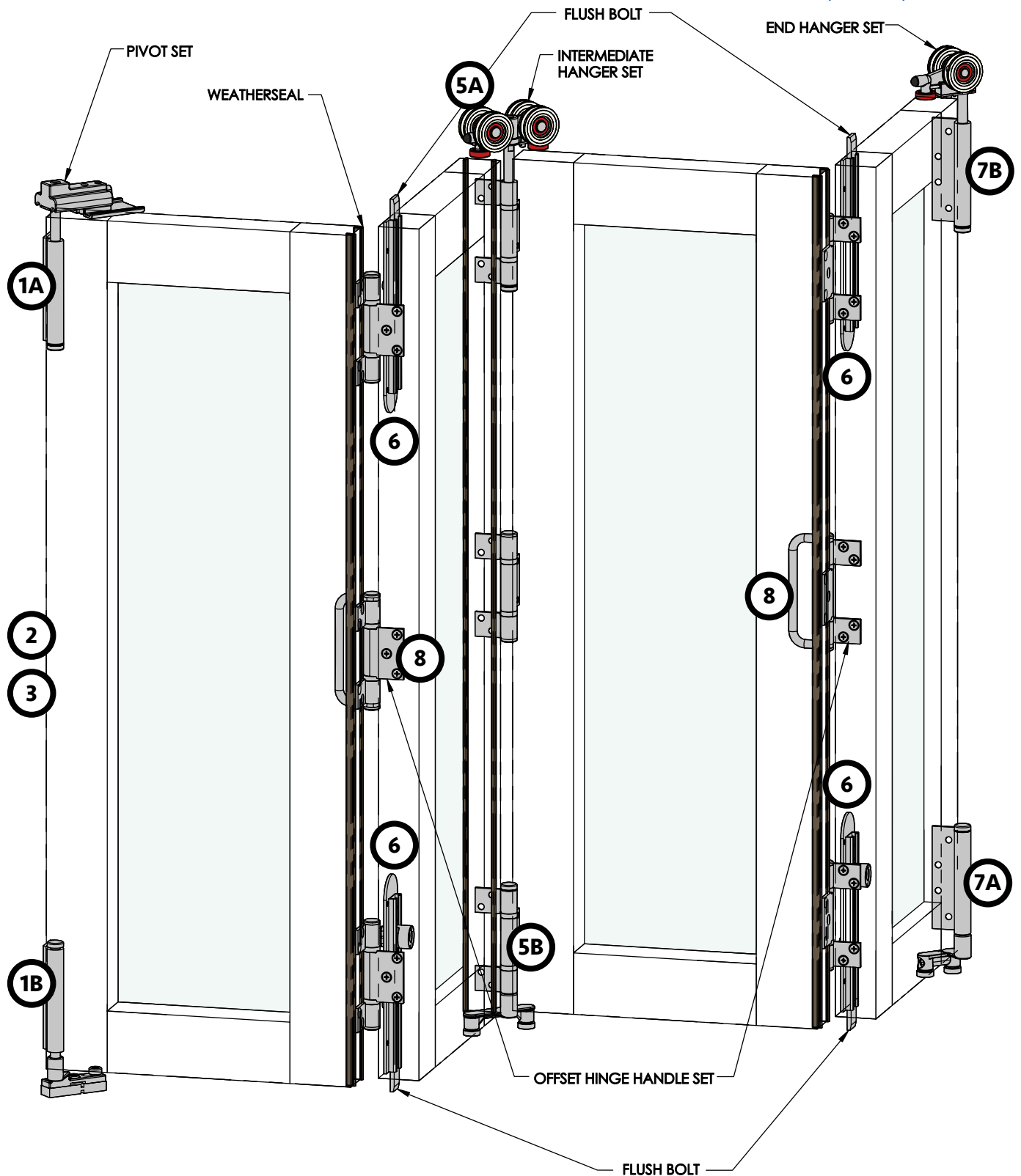
**FULL TECHNICAL INSTRUCTIONS  
AVAILABLE ON REQUEST**

# Brio®

Secured by Design



\*SBD license for Brio's 4s system only.



**Order now on 01752 651330 or [www.sdhardware.co.uk](http://www.sdhardware.co.uk)**

**250A  
TRACK**

- Slim design allowing smaller head sections
- Complete with rail system
- Anodised finish as standard



**BW7  
HINGE HANDLE**

- Ergonomic handle
- Available in 4 finishes



**BWS2-100H  
END HANGER SET**

- Easy adjustment
- 100kg available, extra wheel for heavier doors



**BWS2-100H  
END HANGER GUIDE**

- Non handed
- Unscrew with allen key provided, turn left or right to make product non-handed



**WEA/456R  
FLUSH BOLT**

- Available in 4 finishes
- Available in cranked neck or inward opening
- Locking or non-locking available
- Available in 190, 450, or 600mm, also available in 1000mm (PVD & Stainless Steel only)



**BWS4-100C  
INTERMEDIATE  
HANGER GUIDE**

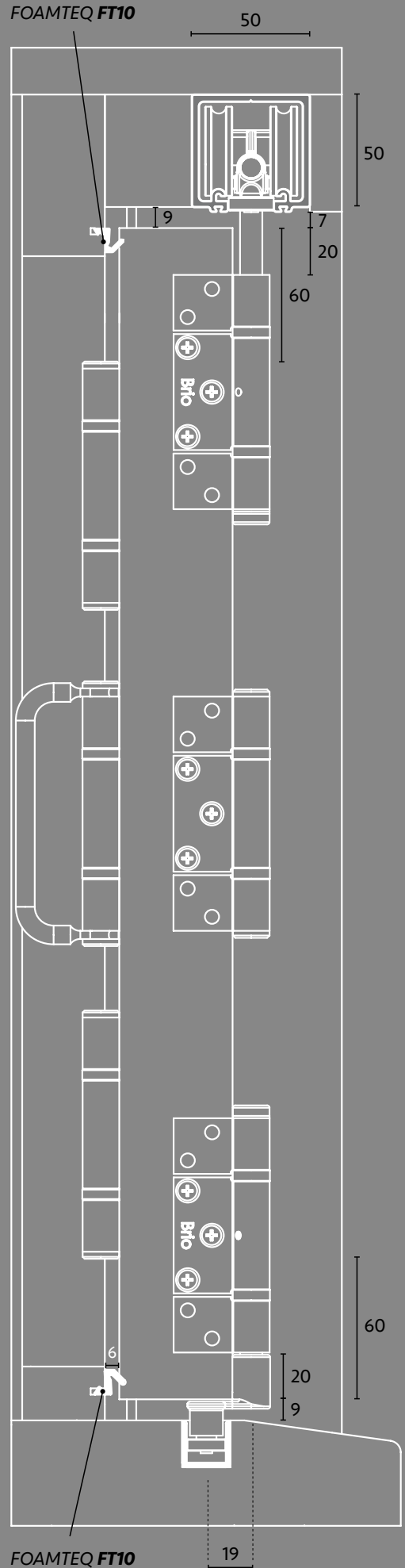
- To work with top hanger
- Security pin



ANTI-SHAKE  
GRUB SCREW  
SECURITY PIN



**SECTION DETAILS**



# ORDER FORM



SASH + DOOR  
HARDWARE

COMPANY NAME: .....

ADDRESS: .....

POSTCODE: .....

TELEPHONE: .....

EMAIL: .....

WIDTH OF OPENING: .....

HEIGHT OF OPENING: .....

LEAF SIZES: HEIGHT ..... WIDTH .....

LEAF THICKNESS: .....

FINISH: BLACK  P.CHROME  GOLD  SILVER

INWARD OPENING  OUTWARD OPENING

MAGNETIC HOLD BACK CATCH

HYBRID CILL

JAMB PIVOT  or SECURITY ALIGNER

WEATHERSEALS: White  or Brown

## CONFIGURATIONS

### 2 DOOR

A. 

### 3 DOOR

A. 

B. 

### 4 DOOR

A. 

B. 

C. 

*If the configuration you require is not above, please draw out the leaf formation below.*

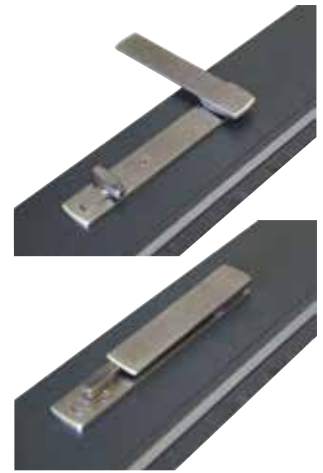
We have access to many internal and external Bi-Fold and straight sliding systems. Please give us a call or email with your requirements and we will be happy to source for you.

BI-FOLD DOOR CONFIGURATION

## 286 Lock

Brio's 286 Dual Point Lock is suitable for Brio's exterior folding system Weatherfold 4s. The 180° operation of the low profile handle activates a 25mm throw to lock off doors securely top and bottom. Secure locking is provided by a Euro cylinder and convenient low profile key, all with an integrated escutcheon for elegant, clean lines. No fuss hinge fixing blocks and simple machining make this dual point lock quick and easy to install. The matching 288 lever handle operates with any 92mm centre lock and is also available in cast stainless steel or cast alloy.

- Specification – Timber
- Min panel thickness: 45mm
- Max panel thickness: 70mm
- Max panel height: 3.5m
- Backset: 35mm
- Throw length: 25mm



## Weatherfold 5c 80kg (Bottom Rolling)

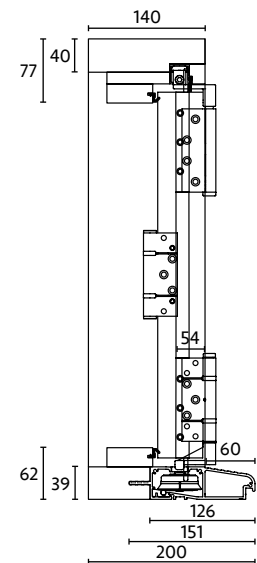
Brio Weatherfold 5c is an exterior bottom-rolling bifold system for panels up to 80kg. It eliminates the need for a reinforced structural beam above the opening, as all the doors weight is carried by bottom rollers. Bottom-rolling type systems are particularly favoured by architects, as the absence of the restricting top beam also means there is more room for design creativity.

Brio Weatherfold 5c is designed to handle Timber panels up to 80kg with precision and ease. This innovative Brio hardware system creates openings up to 3.3m high and 16m wide, with up to 8 equal size panels folding seamlessly in each direction.

### Specification

- Max Door Weight: 80kg
- Max Door Width: 1000mm
- Max Door Height: 3300mm
- Min Door Thickness: 35mm
- Max Number of Doors: 8 each way
- 5c can only be used with the 286 lock (not flush bolts)

FULL SECTION DETAILS  
AVAILABLE ON REQUEST



## Interfold

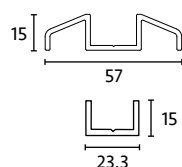
### Interfold 4s and Window 35

Interfold 35 uses precision chrome bearings with an offset guide and concealed channel to fold top hung panels of 35kg in residential and commercial folding window and door applications.

This system is a smaller version of the leading Exterior 4s, with easy adjustment and simple assembly. It comes with 2 different bottom tracks which are either concealed or surface mounted. The system allows panels to close against rebates which is necessary for applications where sound and light proofing is required. Interfold hardware is suitable for timber door systems with all doors of equal width.

- Max Panel Weight: 35kg
- Max Panel Width: 1000mm
- Max Panel Height: 2600mm
- Min Panel Thickness: 35mm
- Max Number of Panels: 6 each way
- Full technical details available
- Surface mount or recess track

### TRACK OPTIONS



**PLEASE CONTACT US FOR PRICES!**