

Metolux®

2 Part Pre-Mix Wood Filler



Product Data Sheet

Description

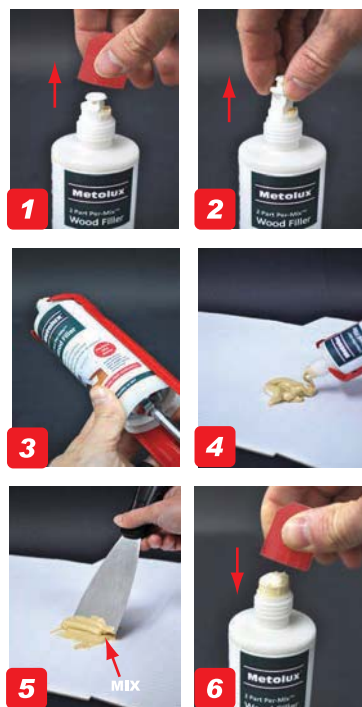
Metolux 2 Part Pre-Mix Wood Filler is an innovative two-part high strength wood filler designed to guarantee the proper ratio mix of hardener and resin to provide the strongest repair possible to wood imperfections.

Key Benefits

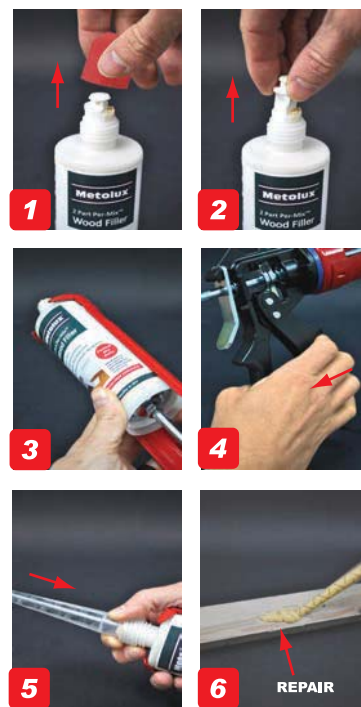
- Guaranteed ratio hardener/resin mix
- Used with a standard silicone tool and a putty knife, or mixer nozzle option
- Strength of a 2 part mix with the ease of a 1 part filler
- No need for separate hardener tubes
- Weatherproof
- Re-use many times
- Low Odour

Product Usage

Manual Mixing



Or with Mixer



The information and data given is based on our own experience, research and testing and is believed to be reliable and accurate. However, as Chemfix Products cannot know the varied uses to which its products may be applied, or the methods of application used, no warranty as to the fitness or suitability of its products is given or implied. It is the users responsibility to determine suitability of use. For further information please contact our Technical department.

Metolux®

2 Part Pre-Mix Wood Filler



Repair Instructions



1. To ensure proper adhesion the surface must be dry, clean and free from dust oil and grease.
2. Mixing will start the curing process therefore prepare only what can be used immediately.
3. Apply using a spatula or a putty knife leaving the filler slightly "proud" of the surface to allow for sanding.
4. Quick and easy sanding is achieved if the filler is sanded down within 15-30 minutes from mixing and application.
5. The final repair is ready for coating

Gel and Cure Times

Temperature	Gel	Cure
5	10.00	35.00
15	4.35	22.00
25	2.00	13.00

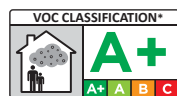
Compressive Strength 43.18 N/mm²
 Tensile Strength 9.74 N/mm²
 Flexural Strength 13.97 N/mm²

Product Codes

Code	Product	Qty
	White	
65424	Pre Mix 300g Display Box, 2 mixers ea	15pcs
65422	Pre Mix 300g Plain Box without mixers	15pcs
65420	Pre Mix 300g Plain Box 2 mixers ea	10pcs
	Natural	
65423	Pre Mix 300g Display Box, 2 mixers ea	15pcs
65421	Pre Mix 300g Plain Box without mixers	15pcs
65429	Pre Mix 300g Plain Box 2 mixers ea	10pcs
	Ancillaries	
65372	Spare Mixers Bag Short with Hanger	10pcs
65463	Chemfix Silicone Extrusion Tool	12pcs



Approvals and Certifications



*Information on the emission of volatile substances in indoor air, with a risk of inhalation toxicity, on a scale ranging from class A+ (very low emissions) to C (high emissions) level.

Handling and Storage

This product should be stored between +5°C & +25°C.
 Avoid Direct Sunlight
 The Shelf life of the product is 12 months from the manufacture date.

Manufactured by Chemfix Products Ltd in the UK