

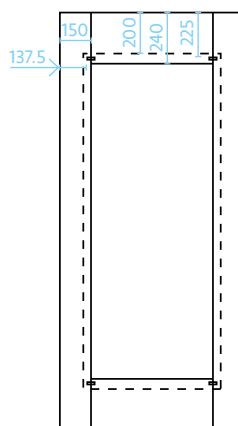
Abendor Door Panels/Blanks

SDH have partnered with OH Panels of Denmark to bring you the 'Abendor' range of External Door Blanks. Used by many of the UK and European leading joineries this product offers a competitive alternative to solid doors. Removing many processes in the workshop. The benefits are clear to see and at a price that will increase your profit margin and have less remedial work as this type of door is more stable.

Benefits include

- Exterior use
- 58mm Thick
- Secure By Design
- 6mm Veneer face (Chen Chen) which can be "V" Grooved
- 0.3mm Aluminium sheet front and back for stability and moisture barrier
- U Value of 1.28 w/m2K
- Insulated core with 2x4mm plywood that adds strength and stability
- Stiles of 150 mm Pine
- Rails 240 mm (top/bottom)
- Weight 32kg

We stock the 935 x 2150 which can be cut down to 715 x 1750



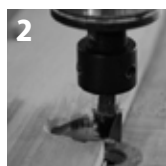
Fitting / Assembly



1

Cut to size

Each door blank can be cut down to size to suit your requirements. Please see size options.



2

Cut-outs

Prepare all cut-outs for glazing/hinges/spyholes/letterboxes etc. using standard tools. Should you require detailed information please refer to the OH Industri website.



3

Grooves and/or rebating

The veneer surface can be grooved to a maximum depth of 3mm to create the desired design by using conventional tooling.



4

Rebating and fitting of bolection moulds

If you are using a bolection mould, rebate the surface of the door to a maximum of 3 mm to receive the finished cassette as per diagram. Pin and glue to surface ensuring that you seal the edges.



5

Prime / Paint

There are no additional processes required when priming and painting OH Door Blanks. Simply follow the specification and recommendations from your paint supplier.



6

Fit hardware and glazing

Once the top coat is dry and ready to glaze, simply fit all required hardware as per your normal method and glaze the door if required. Please refer to the OH Industri website to ensure the correct sealing and fitting guide lines are followed.



7

A door finished to your style

The OH Industri Door Blank gives you the flexibility to produce endless designs to suit most of your customer requirements. Low U-Values and a quality external entrance door without the complexity of a traditional frame door. Please contact OH Industri or speak to your stockist should you require additional information.

Full technical details and specification on next page.

Datasheet

June 2018

Doors from stock - Exterior door leaf 58 mm - Veneer for paint - SBD

| Size | Cut down |
|-----------------------|--------------------------------|
| | Can be trimmed in width/height |
| <i>Width - Height</i> | <i>Cut down width - height</i> |
| 740 x 2150 mm | 520 x 1750 mm |
| 825 x 2040 mm | 605 x 1640 mm |
| 935 x 2150 mm | 715 x 1750 mm |
| 1155 x 2400 mm | 935 x 2000 mm |

Prices:

Based on delivery of full pallets (24 pcs per pallet)

Specification:

Thickness: 58 mm

6 mm veneer for paint with 0,3 mm aluminium

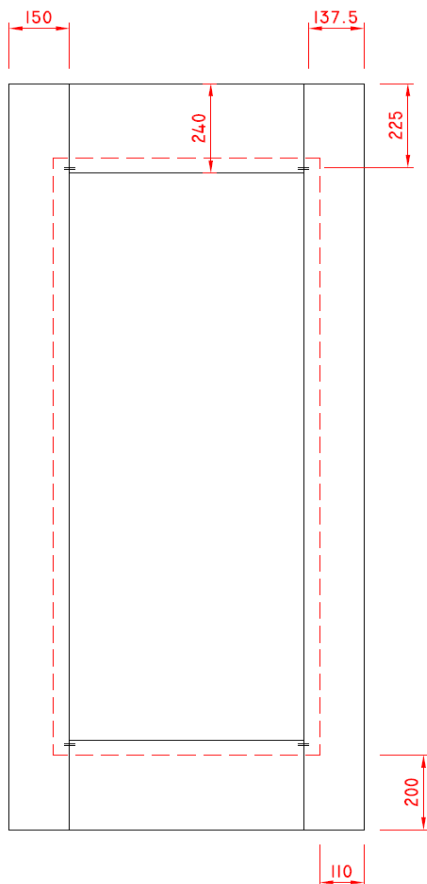
Stiles: 150 mm pine knotted

Rails: (top/bottom) 240 mm pine knotted

Core: Insulation polystyrene with 2x4 mm plywood

U Value: 1,28 w/m²K (Door leaf 1000 x 2000 mm)

Weight: App.15,7 kg/m²



Drawing left:

Indicates position of steel nails in corners

Stiles 150 mm (Rails top/bottom 240 mm)

