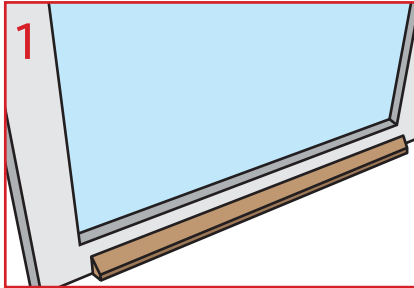
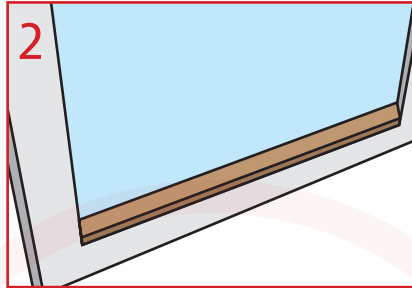


Qwood Pinned Glazing Bead

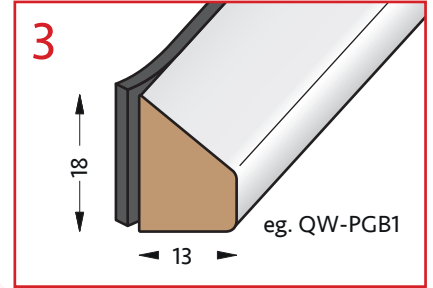
Qwood profiles: PGB1, PGB2, PGB3, PGB4, QW-SD-SPGB2, QW-SD-SPGB1



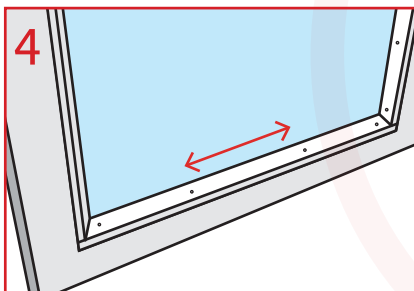
1 Cut beads to required lengths, recommend to cut top to bottom rails square and scribe the side rails.



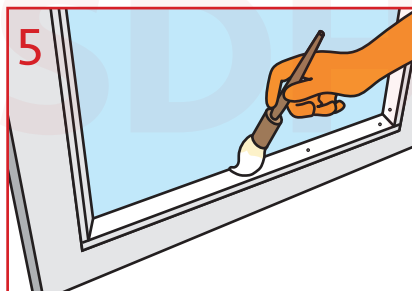
2 Check beads fit correctly in window frame. Paint before or after cutting to size.



3 Apply 2.0 mm double sided glazing tape to glazing face of bead. Remove liner from glazing tape and apply beads to glazing into the frame.



4 Pin beads every 150 mm to 200 mm securely to frame. Pin on end of each bead for extra security.



5 Fill pin head holes. Touch up paint.

